



PRODUCT DATA SHEET

MapInfo Professional® v12 Version Comparison

WORK SMARTER, NOT HARDER, WITH THE
PREMIER LOCATION INTELLIGENCE SOLUTION

How Does v12 Compare to Previous Versions?

MapInfo Professional v12 adds:

Extensively Improved Labeling Capabilities

- Better placement of curved labels
 - More curved labels placed on a map due to improved label placement algorithm
 - Auto-position option determines better positioning of a curved label
 - Can click and drag curved labels
 - During dragging of a curve label, polyline highlights to provide visual feedback
 - Fallback to rotated labels where data lines are too jagged or curved label can't fit
- Better placement of region labels
 - Auto-positioning algorithm to find a best location for a label
 - Region labels can be confined within the polygon
 - Automatically use different font sizes to make labels fit within a region
 - Use abbreviations to fit more labels on a map
 - Automatic positioning of labels with callouts when they will not fit within a region

Layer Control Enhancements

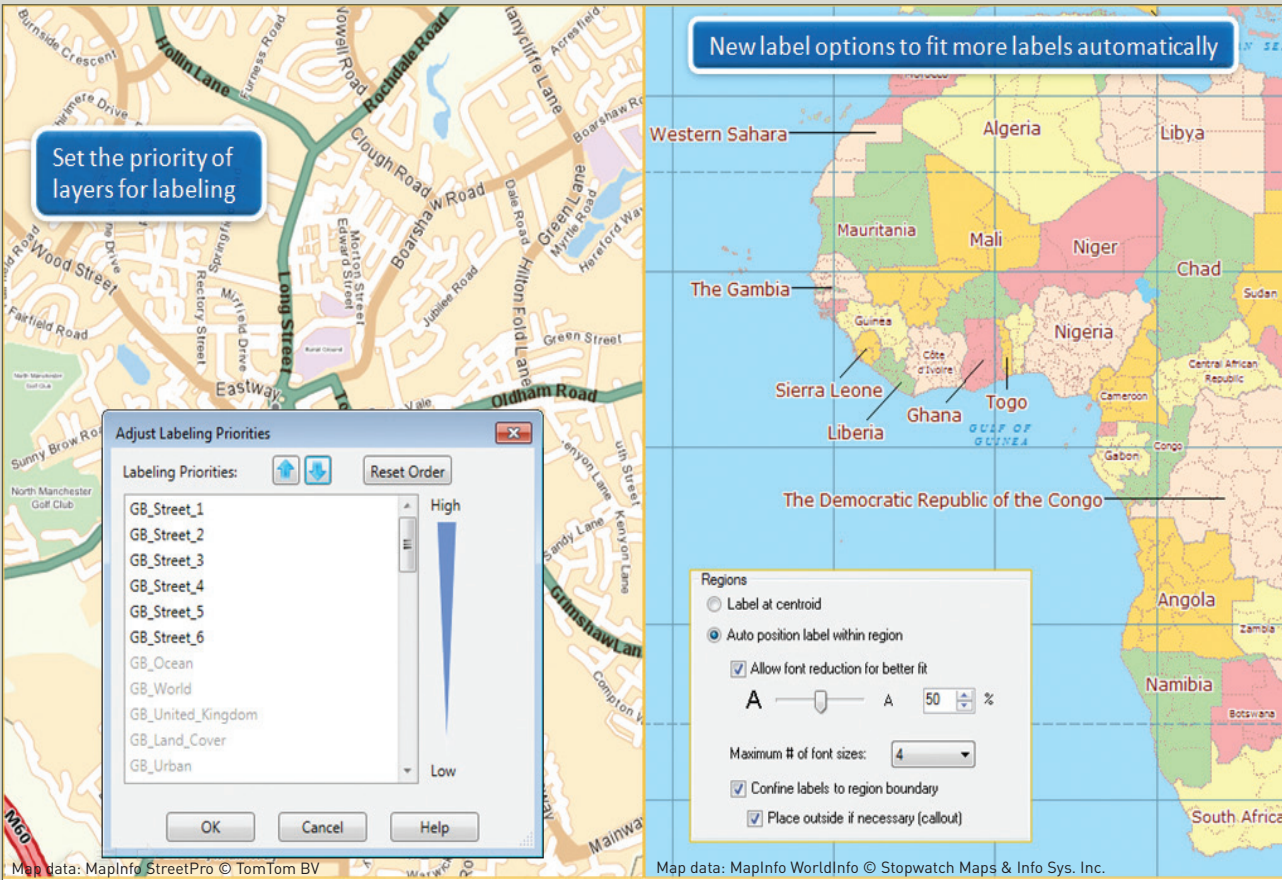
- Redesigned Layer Properties dialog to provide better user experience with labeling options and rules
- New right-click menu item to clear custom labels for one layer at a time
- New dialog to set layer priorities/importance for labeling
- New right-click menu item to select all objects from a layer
- Clickable icons in the layer control display a "glow" effect when mouse is put over them to indicate that you can select them
- A shortcut to make it easier to modify themes. Clicking the icon to the left of a theme displays the Modify Thematic Map dialog box
- The Sample box in the Layer Properties dialog box shows you how various options affect the appearance of the layer and its labels

SUMMARY

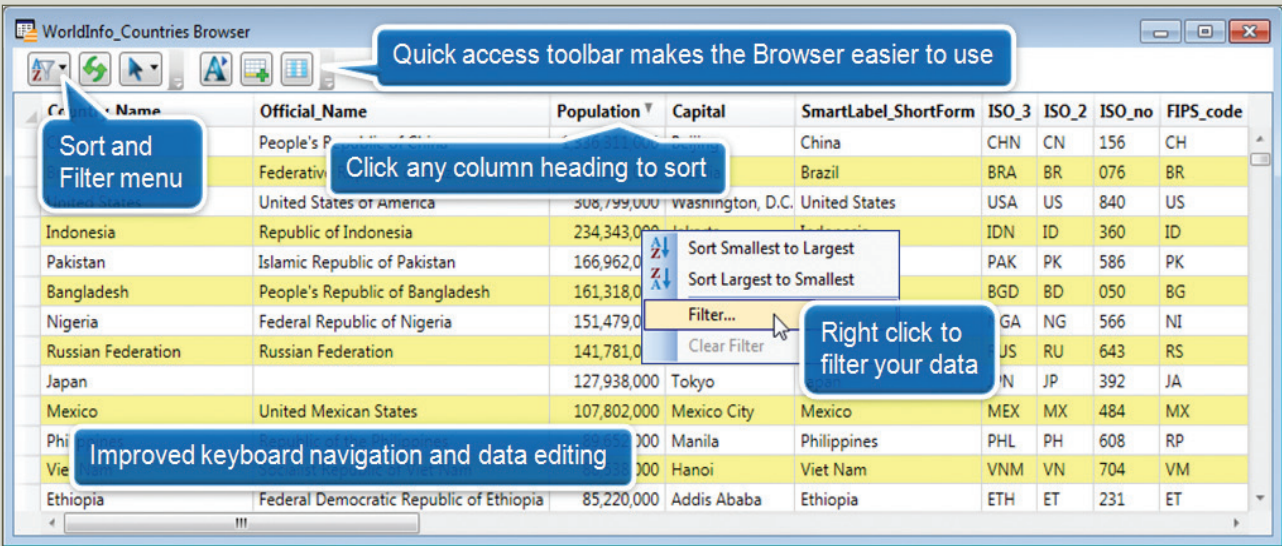
With MapInfo Professional v12 we make it even easier to visualize potential, whether it is for a public service, a crime-scene hotspot, or the ideal location for a new bank branch or retail outlet. A Microsoft® Windows®-based mapping application, MapInfo Professional v12 helps business analysts and GIS professionals visualize and share the relationships between data and geography. Add on Premium Services and out-of-the-box connectivity to MapInfo Manager's data management capabilities, and v12 continues to set the standard for easy to use mapping data creation, editing, visualization and analysis.

Work smarter, not harder, with
MapInfo Professional v12.

MAPINFO PROFESSIONAL MAKES IT EASIER TO VISUALIZE POTENTIAL AND IMPROVE STRATEGIC DECISION-MAKING.



Some of the new labeling capabilities introduced in MapInfo Professional v12.



The all new Browser window introduced in v11 and improved in v11.5 makes working with data easier than ever.

Improved Scalebar

- New option for transparent background and border
- Option for automatic sizing to use “nice” rounded off numbers
- Improved sizing – scalebar height adjusted if cartographic scale is not showing

Easier Printing to Cartographic Scale

- Cartographic scale now displayed concurrently with map scale when setting map views, layout frames and printing maps.
- Status bar option for cartographic scale – easier to select

Tile Servers – option to snap the map zoom to the closest cartographic scale

In-product Notifications About MapInfo News and Maintenance Releases

Cartographic Legend Enhancements

- Control over order of objects within a frame
- Better looking cartographic legends with automated word wrapping
- Customize the sizes of the style swatches for each layer

Quickly align objects in the Layout window with new right-click shortcuts

Data Access

- Support for SQLite database system
- Support for PostGIS v2.0
- Improved support for SQL Server Geography data type
- MapInfo EasyLoader update for the above
- Option to connect to Oracle using Operating System authentication
- Support for WFS v1.1
- Improved UI for opening multiple DBMS tables.
- New Quick Translator for importing and exporting data files (replaces the MapInfo Universal Translator)
 - Save and reuse workflows
 - Batch import
 - Fine tune how input data is handled by setting parameters specific to the input data format
- Easily compare the structure of multiple tables
- Increased size of an individual record in a native MapInfo table from 4000 bytes to 63,500 bytes

SPECIFICATIONS v12

Operating Systems

DESKTOP

- Windows XP Professional 32-bit Service Pack 3 (SP3)
- Windows 7 Ultimate 32-bit SP1
- Windows 7 Ultimate 64-bit SP1 with 32-bit compatibility mode
- Windows 8 32-bit
- Windows 8 64-bit

SERVER

- Windows 2008 Server R2 64-bit SP1 with XenApp 6.0
- Windows 2008 Server R2 64-bit SP1
- Windows 2012 64-bit

Database Servers

SPATIAL

- Microsoft SQL Server 2005 with SpatialWare 4.9
- Microsoft SQL Server 2008 (also called SQL Server Spatial)
- Microsoft SQL Server 2012 (also called SQL Server Spatial)
- Oracle Spatial 11Gr2, 10Gr2
- PostgreSQL 9.0.3 with PostGIS 1.5
- PostgreSQL 9.x with PostGIS 2.0.x
- FDO 3.8

XY:

- Microsoft Access 2007, 2010
- Microsoft Office 2013
- Microsoft SQL Server 2005

Database Connectivity

ODBC DRIVERS

- Microsoft SQL Server 2008 Native Client v10
- Oracle ODBC Driver 11.2
- PostgreSQL ANSI ODBC driver 9.01.02

ORACLE OCI CLIENT

- Oracle Instant Client v11.2.0.2.0

FDO TOOLKIT

MAPINFO PROFESSIONAL HELPS BUSINESS ANALYSTS, PLANNERS, AND GIS PROFESSIONALS VISUALIZE AND SHARE THE RELATIONSHIPS BETWEEN DATA AND GEOGRAPHY.

MapCAD Update

- New tool for drawing orthogonal polygons
- Undershot/overshot – match up line objects to a reference object
- Support for using bounded coordinate systems for greater accuracy

Polybuilder Utility

- Simplifies the conversion of digitized linework into polygon vector objects

Licensing Upgrade

- Reduces or eliminates instances of broken licenses
- Support for reinstalling node locked licenses on the same machine without decrementing license count

Coordinate Systems and Projections

- Support for Extended Transverse Mercator projection
- SIRGAS 2000 datum for South America
- New PRJ entries and EPSG codes

MapInfo Professional v11.5 added:

Browser Window Improvements

- Excel-like functionality with the addition of sort and column filtering functionality from directly within the browser window
- Refresh data within browser: If a user is making edits to data or working with an RDBMS, the refresh button will quickly refresh data
- New quick access toolbar: Text style, select all/deselect all, insert row and pick field are now just a click away in the built-in toolbar

New Legend Designer

- An all-new Legend Designer window enables the user to easily create and preview map legends in one step
- Includes built-in quick access toolbar for easy access to commonly used capabilities
- Legend window has snap-to-grid functionality for easy movement and grouping of symbols
- Left and right indent for easy, consistent movement of symbols
- Guidelines (similar to PowerPoint) to align symbols
- Zoom in/zoom out within legend window to view detail of symbols
- New legend windows can be used in Layout window

SPECIFICATIONS v11.5

Operating Systems

DESKTOP

- Windows XP Professional 32-bit Service Pack 3 (SP3)
- Windows 7 Ultimate 32-bit SP1
- Windows 7 Ultimate 64-bit SP1 with 32-bit compatibility mode

SERVER

- Windows 2008 Server 32-bit SP2
- Windows 2008 Server 32-bit SP2 with XenApp
- Windows 2008 Server R2 64-bit SP1

Database Servers

SPATIAL

- Microsoft SQL Server 2005 with SpatialWare 4.9
- Microsoft SQL Server 2008 (also called SQL Server Spatial)
- SQL Server 2012 Release Candidate 0-1
- Oracle ODBC driver 11.2
- PostgreSQL ANSI ODBC driver 8.x

XY

- Microsoft Access 2007, 2010

Database Connectivity

ODBC DRIVERS

- Microsoft SQL Server 2005
- Microsoft SQL Server 2008 Native Client
- Microsoft SQL Server 2012 Native Client
- Oracle ODBC driver 11.2
- PostgreSQL ANSI ODBC driver 8.x

ORACLE OCI CLIENT

- Oracle Instant Client version 11.2.0.1.0

Ease-of-Use Enhancements

- Improved support for using multiple monitors
- Improved zooming options when using the mouse wheel
- Automatically add queries to a map
- Improved support for ECW format raster images
- Improved Help section on keyboard shortcuts and commands

Two New Tools in MapCAD

- Convert polylines into curved lines (splines)
- Create text from a database
- Support for accessing data from Google Earth Enterprise Tile servers

MapInfo Professional Workspace Enhancements

- If a Tab file is missing and the user can't locate it, the workspace gives the option of skipping the missing file in order for the workspace to open and display all available Tab files

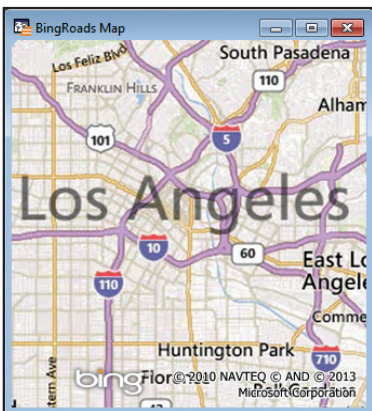
Improved MapInfo Manager Integration

- Automatic updates of metadata when data has been changed in MapInfo Professional
- Edit metadata records directly from MapInfo Professional

MapInfo Professional v11.0 added:

New Table Browser

- Improved navigation makes data entry easier
- Improved appearance and better visualization
- Sort data quickly within the Browser



New Bing Premium Services

- Additional Bing services available as an optional extra
 - Access worldwide Bing street maps
 - Find a location and move the map to that location

Enhanced Support for 64-Bit Operating Environments

- Use up to 4GB of RAM instead of 2GB for “memory hungry” operations

Updated Preferences Dialog

- More intuitive grouping of options for better navigation

SPECIFICATIONS v11

Operating Systems

DESKTOP

- Windows XP SP3 (required) for .NET 4.0
- Windows 7 Ultimate SP1
- Windows 7 Ultimate 64-bit SP1 with 32-bit compatibility mode

SERVER

- Windows 2008 Server 64-bit SP2
- Windows 2008 R2 64-bit SP1
- Windows 2008 (64-bit) Server SP2 with XenApp (aka Citrix)

Database Servers

SPATIAL

- SQL Server 2005 with SpatialWare 4.9
- SQL Server 2008
- Oracle Spatial 11Gr2, 10Gr2
- PostgreSQL 8.3 with PostGIS v1.3
- PostGIS v9.0 with PostGIS v1.5.2

XY

- Microsoft Access 2007, 2010
- Microsoft SQL Server 2005
- Microsoft SQL Server 2008 XY on a spatialised DB
- Oracle Spatial 10Gr2, 11Gr2

Database Connectivity

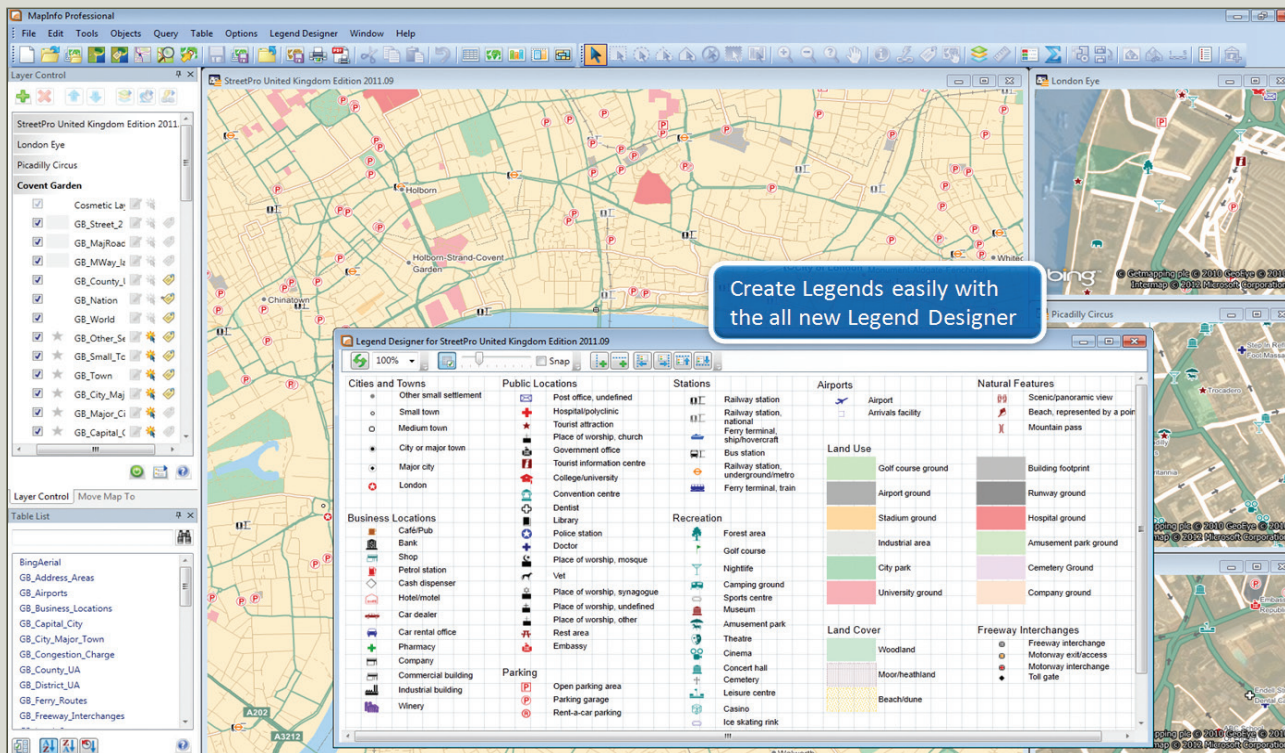
ODBC DRIVERS

- Microsoft SQL Server 2005
- Microsoft SQL Server 2008 Native Client
- Oracle ODBC driver 11.2
- PostgreSQL ANSI ODBC driver 8.x

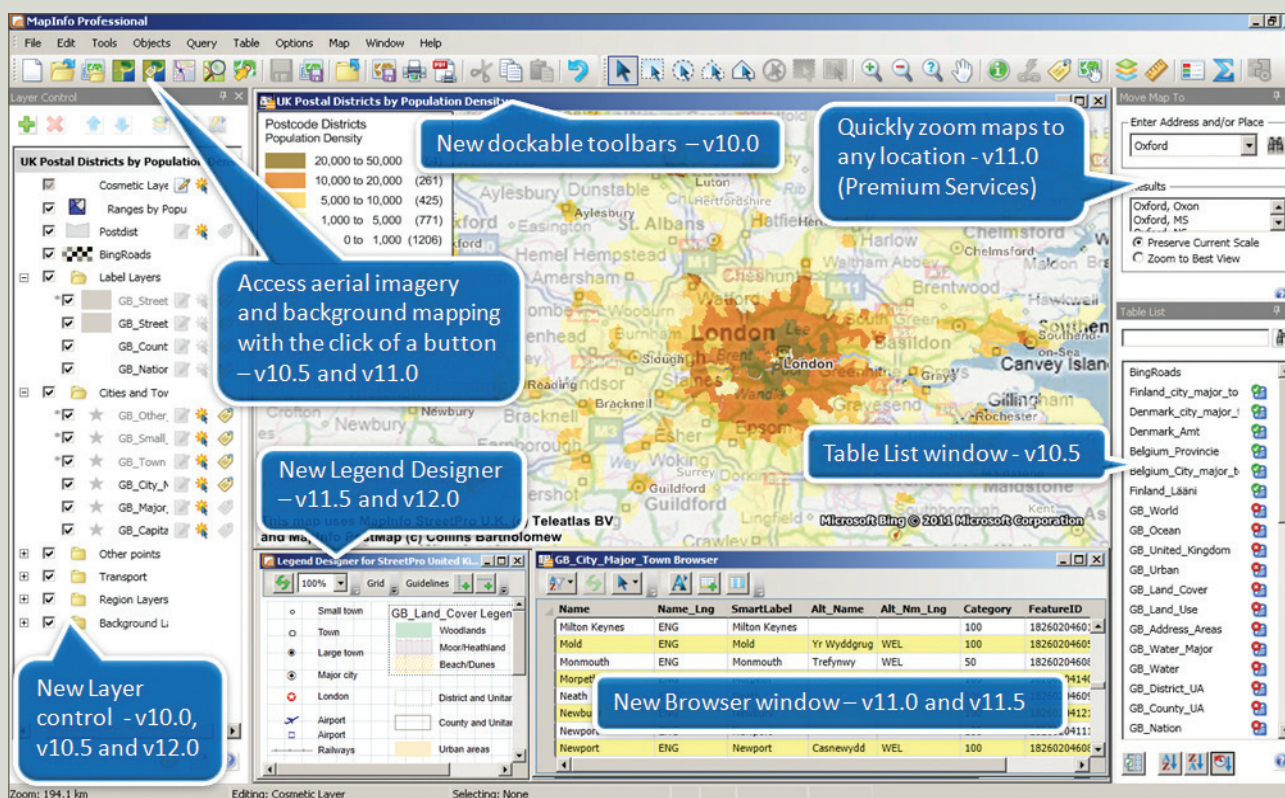
ORACLE OCI CLIENT

- Oracle Instant Client version 11.2.0.1.0

**MAPINFO PROFESSIONAL CONTINUES TO SET THE STANDARD FOR EASY-TO-USE
MAPPING CREATION, VISUALIZATION, AND ANALYSIS.**



The Legend Designer window first introduced in MapInfo Professional v11.5 and now improved in v12.



Some of the user interface improvements in recent releases of MapInfo Professional.

Open MWS Map Data in MapInfo Professional

- Share workspaces with MapInfo Stratus and MapInfo MapXtreme applications
- Support for multiple map windows, styles, thematic layers and legends

New MapCAD Tools

- Scale objects – increase/decrease size of geographic objects by a specified factor
- Orthogonal points – position points orthogonally to a reference line
- Measurement line – generates measurement lines with cumulated distance and distance to objects

Integration and Data Management with MapInfo Manager

- Search, browse and open data using the CSW catalog service
- Fast and convenient access to table metadata from Layer Control and the Table List window
- Ability to add tables to the MapInfo Manager Library directly from MapInfo Professional

MapInfo Professional v10.5 added:

Metadata Browser

- Search OGC-compliant CSW catalogs within your organization or from around the world
- Refine search using existing map window
- Launch multiple searches against multiple servers
- Add files to your map from catalog entries when exposed as File path; Zip file; WMS; WFS; Tile server; when available

Data Access

- Directly open Google KML and KMZ format data
- Tile server data services
- Microsoft Bing Maps – access to worldwide aerial and hybrid map imagery

Improved Ease of Use

- Enhanced toolbars and cursors to improve ease of use and ease of learning
- Toolbar locations from third-party applications are remembered from session to session
- New icons for MapCAD tools
- Enhanced docking speeds up user operations
- Dockable named views window
- Dockable metadata browser for searching industry standard catalogs of data

SPECIFICATIONS v10.5

Operating Systems

DESKTOP

- Windows 7 Ultimate
- Windows 7 Ultimate 64-bit with 32-bit compatibility mode
- Windows Vista Ultimate SP1
- Windows XP Professional SP3

Database Servers

- Windows 2008 Server
- Windows 2008 Server with Citrix XenApp 5.5 (this is the new name for Citrix Presentation Server)
- Windows 2008 Server R2 64-bit with Citrix XenApp 6.0

